



# Tungsten carbide dies

## Wire drawing dies

www.estevesgroup.com



## Highlights

- Virtually no maximum size
- Ideal for ferrous rod-size wire
- Ideal for short runs and trial runs
- Several grades available

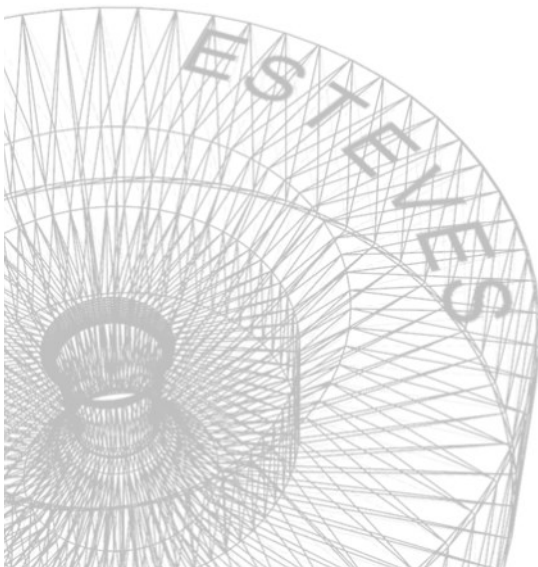
**High performance tungsten carbide drawing dies allow wire drawing companies to meet quality, uptime and speed standards.**

Wire drawing dies are commonly used to reduce the diameter of various ferrous and non-ferrous rods and wires. Applications include various grades of low, medium and high carbon steels, steel alloys, stainless steel, welding wire as well as various non-ferrous rods and wires.

**Esteves Group** tungsten carbide drawing dies (TC dies) give the wire manufacturer the ability to maintain uniform wire roundness, minimizing material usage and scrap.

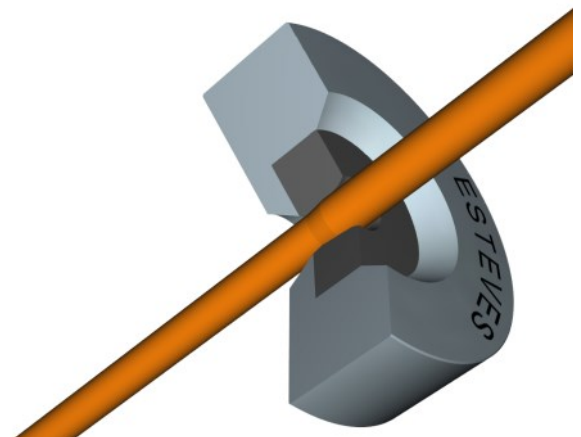
Tungsten carbide dies are an excellent option for manufacturing ferrous rod-size wires. They are also ideal for short trial runs. Esteves Group TC drawing dies are manufactured with a mirror polish and a smooth wire entry to ensure optimal die life and string-up.

**Esteves Group offers a complete line of TC drawing dies for rod-size wire down to medium-size wire.**



## We Specialize in...

- Wire Drawing Dies
- Bunching, Stranding & Compacting Dies
- Split Dies
- Tubing Dies
- Shaped Dies
- Extrusion Tooling
- Die Reconditioning Tools
- Engineering Services
- Customer Support





# Tungsten carbide dies

## Wire drawing dies

### Key Features

- Usable for dry and wet draw
- Available in any casing size
- Various carbide grades available

### Benefits

- Ideal for ferrous rod-size wire
- Ideal for short and trial runs
- Wire remains round, even with significant wear
- Carbide grade tailored to wire material when required
- Predictable cast & helix

Blank Type	Tungsten Carbide											
size	9 x 9	16 x 13	20 x 17	25 x 20	30 x 24	35 x 24	40 x 24	45 x 25	50 x 25	55 x 27	60 x 27	65 x 27
<i>Standard die hole diameter</i> <sup>1</sup>												
new die size range (mm)	0.10	0.31	3.51	6.01	8.01	11.01	14.01	17.01	20.01	24.01	28.01	32.01
	-	-	-	-	-	-	-	-	-	-	-	-
	0.30	3.50	6.00	8.00	11.00	14.00	17.00	20.00	24.00	28.00	32.00	36.00
<i>Standard casing dimensions</i> <sup>2</sup>												
diameter (mm)	28	43	43	60	70	100	100	100	120	120	120	140
height (mm)	15	27	31	35	40	45	45	45	50	50	50	55

Blank Type	Tungsten Carbide											
size	70 x 28	75 x 28	80 x 30	85 x 30	90 x 30	95 x 30	100 x 32	105 x 32	110 x 32	115 x 34	120 x 34	135 x 24
<i>Standard die hole diameter</i> <sup>1</sup>												
new die size range (mm)	36.01	40.01	44.01	48.01	52.01	56.01	59.01	62.01	65.01	68.01	71.01	74.01
	-	-	-	-	-	-	-	-	-	-	-	-
	40.00	44.00	48.00	52.00	56.00	59.00	62.00	65.00	68.00	71.00	74.00	77.00
<i>Standard casing dimensions</i> <sup>2</sup>												
diameter (mm)	140	160	160	180	180	200	200	220	220	250	250	250
height (mm)	55	60	60	60	60	60	60	65	65	70	70	70

<sup>1</sup> Other sizes are available on request

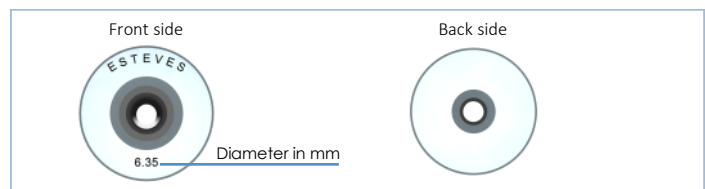
<sup>2</sup> More casing dimensions are available

### TC Wire Drawing Die Standard Tolerances

Metric tolerances (mm)	
Diameter	Tolerance
≥ 0.800	+0 / -0.0150

Tighter tolerances are available when required

### STANDARD PRODUCT CODING



Please contact Esteves Group for any special engraving requirements.

More drawing die types, cabling tooling, and extrusion tools are available. Please contact **Esteves Group** for a quotation for your wire and cable tooling.

Drawing, and cabling tooling below:  
PCD dies, SSCD dies, ND dies, shape dies, bunching and stranding dies, split dies

